



THE PURPOSE OF BAR CODE READERS IN THE HEALTHCARE INDUSTRY

The key mission of scanners in the healthcare industry is to improve the quality of patient care while reducing medication errors. Additionally, healthcare environments have requirements that scanners need to be regularly cleaned and disinfected. The Datalogic Gryphon™ HC product series is specifically developed for healthcare applications with Disinfectant-Ready enclosures treated with anti-microbial additives and are designed to withstand daily cleaning with harsh disinfectant solutions.

Gryphon HC readers provide unmatched flexibility offering healthcare professionals the complete suite of reading and radio technologies available within the Gryphon series. From corded models to standard Bluetooth® wireless technology or to the powerful Datalogic STAR narrow-band radio, Gryphon HC readers offer customers the widest variety of products and radio choices with disinfectant-ready enclosures.

In healthcare environments where mobility is not needed, the GD4100-HC reader offers an affordable corded solution, while the GM4100-HC or GBT4100-HC models (STAR or Bluetooth) provide full installation flexibility and extended mobility for cordless operations. A patented 2-position cradle provides functional and reduced space requirements. The GM4100-HC model is equipped with Datalogic's STAR Cordless System™ providing bi-directional communication and an optional display with a 3-button keypad that adds real-time battery status, radio coverage indicator and enables operator interaction with the host system.

All Gryphon HC readers include the patented Datalogic 'Green Spot' for good read/perfect match feedback, ideal for quiet environments such as bedside patient care where the perfect match can offer a simple additional tool to avoid errors.



MEDITECH



ALL PRODUCTS

- Disinfectant-Ready enclosures treated with anti-microbial additives
- Extremely snappy reading performance
- Extended reading distances
- Wide scan angle for wider codes
- Multi-interface solution supports most popular interfaces
- Water and Particulate Sealing Rating: IP52
- Drop resistance to 1.5 m / 5 ft
- Datalogic's patented 'Green Spot' for good-read feedback

CORDLESS PRODUCTS

- Two choices: STAR 433 / 910 MHz or Bluetooth® wireless technology
- Radio Range: Up to 30.0 m / 98.4 ft
- Batch Mode capability: >1200 codes stored in memory
- Optional display with 3-Key keypad (STAR Only)
- Point-to-point/multi-point transmission
- Datalogic's patented 2-position cradle with Scan-While-Charging capability
- Long lasting user-replaceable Lithium-Ion battery

DECODING CAPABILITY

1D / LINEAR CODES	Autodiscriminates all standard 1D codes including GS1 DataBar™ linear codes.
POSTAL CODES	China Post
STACKED CODES	GS1 DataBar Expanded Stacked; GS1 DataBar Stacked; GS1 DataBar Stacked Omnidirectional

ELECTRICAL

CURRENT	Operating (Typical): 245 mA @ 5 VDC; Standby/Idle (Typical): 120 mA @ 5 VDC
INPUT VOLTAGE	4.75 - 5.25 VDC

ENVIRONMENTAL

AMBIENT LIGHT	0 - 100,000 lux
DROP RESISTANCE	Withstands repeated drops from 1.5 m / 5.0 ft onto a concrete surface
ESD PROTECTION (AIR DISCHARGE)	16 kV
HUMIDITY (NON-CONDENSING)	0 - 90%
PARTICULATE AND WATER SEALING	IP52
TEMPERATURE	Operating: 0 to 55 °C / 32 to 131 °F Storage/Transport: -20 to 70 °C / -4 to 158 °F

INTERFACES

INTERFACES	RS-232 / USB / Keyboard Wedge / Wand Multi-Interfaces
------------	---

PHYSICAL CHARACTERISTICS

COLORS AVAILABLE	Light Green/Light Grey (Rubber/Plastic)
DIMENSIONS ENCLOSURE	18.1 x 7.1 x 10.0 cm / 7.1 x 2.8 x 3.9 in
WEIGHT	Disinfectant-Ready Enclosure Treated with Anti-Microbial Additives 169.0 g / 6.0 oz

READING PERFORMANCE

IMAGER SENSOR	CCD Solid-State
LIGHT SOURCE	Illumination: Dual LED Array 630 - 670 nm
PRINT CONTRAST RATIO (MINIMUM)	15%
READ RATE (MAXIMUM)	325 reads/sec.
READING ANGLE	Pitch: 65°; Roll (Tilt): 35°; Skew (Yaw): 65°
READING INDICATORS	Beeper (Adjustable Tone and Volume); Datalogic 'Green Spot' Good Read Feedback; Good Read LED
RESOLUTION (MAXIMUM)	0.076 mm / 3 mils

READING RANGES

TYPICAL DEPTH OF FIELD	Minimum distance determined by symbol length and scan angle. Printing resolution, contrast, and ambient light dependent. 5 mils: 6.0 to 18.0 cm / 2.3 to 7.0 in 7.5 mils: 3.5 to 30.0 cm / 1.4 to 11.7 in 10 mils: 2.0 to 45.0 cm / 0.8 to 17.7 in 13 mils: 3.0 to 60.0 cm / 1.2 to 23.4 in 20 mils: 3.0 to 80.0 cm / 1.2 to 31.2 in
------------------------	--

SAFETY & REGULATORY

AGENCY APPROVALS	The product meets necessary safety and regulatory approvals for its intended use. The Quick Reference Guide for this product can be referred to for a complete list of certifications.
ENVIRONMENTAL COMPLIANCE LED CLASSIFICATION	Complies to China RoHS; Complies to EU RoHS IEC 60825-1 Class 1 LED Product

UTILITIES

DATALOGIC ALADDIN™	Datalogic Aladdin configuration program is available for download at no charge.
REMOTE HOST DOWNLOAD	Lowers service costs and improves operations: GD4100

WARRANTY

WARRANTY	5-Year Factory Warranty
----------	-------------------------

DATALOGIC ADC'S DISINFECTANT-READY ENCLOSURES FOR HEALTHCARE

Datalogic ADC offers bar code readers designed specifically for the healthcare industry with Disinfectant-Ready enclosures treated with anti-microbial additives that can help fight against the spreading of germs. This is particularly important if the scanner is traveling room-to-room on a medication cart with a nurse. The Disinfectant-Ready enclosures can withstand daily cleaning with harsh chemical cleaning solutions commonly used in a healthcare environment.



PRODUCT	CHEMICAL CONTENT
Sani-Cloth® HB, Sani-Cloth® Plus, Super Sani-Cloth®	Quaternary Ammonium Chloride solution
Hepacide Quat II	Virucidal disinfectant cleaner
Alcohol Wipes	70% Isopropyl Alcohol
CaviWipes™	Isopropanol 10-20%; Ethylene Glycol Monobutyl Ether 1-5%
Virex® 256	n-Alkyl Dimethyl Benzyl Ammonium Chloride; Didecyl Dimethyl Ammonium Chloride
409® Glass and Surface Cleaner	n-Alkyl Dimethyl Benzyl Ammonium Chloride; n-Propoxypropanol
Windex® Blue	Isopropyl Alcohol
Clorox® Bleach	Sodium Hypochlorite; Sodium Hydroxide
100% Gentle dish soap and water	

REFER TO THE DEVICE INSTRUCTION MANUAL FOR PROPER CLEANING METHODS WHEN USING THESE CHEMICALS. DISINFECTANTS SHOULD NOT BE SPRAYED OR Poured ONTO THE SCANNER UNIT. THE SCANNERS MUST ALWAYS BE WIPED DRY AFTER DISINFECTING.

CORDLESS COMMUNICATIONS

DATALOGIC STAR CORDLESS SYSTEM™	Effective Radiated Power: 433.92 MHz: < 10 mW; 910 MHz: < 1 mW Multi-Point Configuration: Max. Readers per Radio Receiver: 16; Point-to-Point Configuration Radio Frequency: 433.92 MHz; 910 MHz Radio Range (Open Air): 433.92 MHz: 30.0 m / 98.4 ft; 910 MHz: 15.0 m / 49.2 ft Two Way Communications
---------------------------------	---

DECODING CAPABILITY

1D / LINEAR CODES	Autodiscriminates all standard 1D codes including GS1 DataBar™ linear codes.
POSTAL CODES	China Post
STACKED CODES	GS1 DataBar Expanded Stacked; GS1 DataBar Stacked; GS1 DataBar Stacked Omnidirectional

ELECTRICAL

BATTERY	Battery Type: Lithium-Ion, 2100 mAh Charge Time: External Power: 4 Hours @ 12 VDC Reads per Charge: 50,000
CRADLE INDICATOR LEDS	Battery Charging (Red); Charge Completed (Green); Power/Data (Yellow)
CURRENT	Charging (Typical): < 8 W; Operating (Typical): < 2.5 W @ 5 VDC; Standby/Idle (Typical): < 2.5 mA @ 5 VDC
INPUT VOLTAGE	4.75 - 14 VDC +/- 5%

ENVIRONMENTAL

AMBIENT LIGHT	100,000 lux
DROP RESISTANCE	Withstands repeated drops from 1.5 m / 5.0 ft onto a concrete surface.
ESD PROTECTION (AIR DISCHARGE)	16 kV
HUMIDITY (NON-CONDENSING)	5 - 95%
PARTICULATE AND WATER SEALING	IP52
TEMPERATURE	Operating: 0 to 50 °C / 32 to 122 °F Storage/Transport: -20 to 70 °C / -4 to 158 °F

INTERFACES

INTERFACES	RS-232 / USB / Keyboard Wedge / Wand Multi-Interface
------------	--

PHYSICAL CHARACTERISTICS

COLORS AVAILABLE	Light Green/Light Grey (Rubber/Plastic)
DIMENSIONS	Cradle: 18.6 x 9.9 x 5.6 cm / 7.3 x 3.9 x 2.2 in Reader: 18.1 x 7.1 x 10.0 cm / 7.1 x 2.8 x 3.9 in
DISPLAY	Display Type: GM4100-HC-D Only: Graphic with backlight; Font Dimensions: User selectable (4 lines x 16 columns default); Screen Dimensions: 32 x 96 pixels
ENCLOSURE	Disinfectant-Ready Enclosure Treated with Anti-Microbial Additives
KEYPAD	GM4100-HC-D Only: 3-Key Keypad
WEIGHT	Cradle: 246.0 g / 8.7 oz Reader: 225.0 g / 8.0 oz

READING PERFORMANCE

LIGHT SOURCE	Illumination: LED Array 630 - 670 nm
PRINT CONTRAST RATIO (MINIMUM)	15%
READ RATE (MAXIMUM)	325 reads/sec.
READING ANGLE	Pitch: +/- 65°; Roll (Tilt): +/- 35°; Skew (Yaw): +/- 65°
READING INDICATORS	Beeper (Adjustable Tone and Volume); Datalogic 'Green Spot' Good Read Feedback; Good Read LED
RESOLUTION (MAXIMUM)	0.076 mm / 3 mils

READING RANGES

TYPICAL DEPTH OF FIELD	Minimum distance determined by symbol length and scan angle. Printing resolution, contrast, and ambient light dependent. 5 mils: 6.0 to 18.0 cm / 2.3 to 7.0 in 7.5 mils: 3.5 to 30.0 cm / 1.4 to 11.7 in 10 mils: 2.0 to 45.0 cm / 0.8 to 17.7 in 13 mils: 3.0 to 60.0 cm / 1.2 to 23.4 in 20 mils: 3.0 to 80.0 cm / 1.2 to 31.2 in
------------------------	--

SAFETY & REGULATORY

AGENCY APPROVALS	The product meets necessary safety and regulatory approvals for its intended use. The Quick Reference Guide for this product can be referred to for a complete list of certifications.
ENVIRONMENTAL COMPLIANCE	Complies to China RoHS; Complies to EU RoHS
LED CLASSIFICATION	IEC 60825-1 Class 1 LED Product

UTILITIES

DATALOGIC ALADDIN™	Datalogic Aladdin configuration program is available for download at no charge.
OPOS / JAVAPOS	OPOS Utilities are available for download at no charge.
REMOTE HOST DOWNLOAD	Lowers service costs and improves operations: BC4010

WARRANTY

WARRANTY	3-Year Factory Warranty
----------	-------------------------

CORDLESS COMMUNICATIONS

BLUETOOTH WIRELESS TECHNOLOGY
 Protocol: Bluetooth 2.0 Certified Class 2
 Radio Frequency: 2.4 GHz
 Radio Range (Open Air): 30.0 m / 98.4 ft

DECODING CAPABILITY

1D / LINEAR CODES
 Autodiscriminates all standard 1D codes including GS1 DataBar™ linear codes.
POSTAL CODES
 China Post
STACKED CODES
 GS1 DataBar Expanded Stacked; GS1 DataBar Stacked; GS1 DataBar Stacked Omnidirectional

ELECTRICAL

BATTERY
 Battery Type: Lithium-Ion, 2100 mAh
 Charge Time: 4 Hours @ 12 VDC
 Reads per Charge: 33,000
CRADLE INDICATOR LEDS
 Battery Charging (Red); Charge Completed (Green); Power/Data (Yellow)
CURRENT
 Charging (Typical): < 8 W; Operating (Typical): < 2.5 W @ 5 VDC; Standby/Idle (Typical): < 2.5 mA @ 5 VDC
INPUT VOLTAGE
 4.5 - 14 VDC +/- 5%

ENVIRONMENTAL

AMBIENT LIGHT
 100,000 lux
DROP RESISTANCE
 Withstands repeated drops from 1.5 m / 5.0 ft onto a concrete surface.
ESD PROTECTION (AIR DISCHARGE)
 16 kV
HUMIDITY (NON-CONDENSING)
 5 - 95%
PARTICULATE AND WATER SEALING
 IP52
TEMPERATURE
 Operating: 0 to 50 °C / 32 to 122 °F
 Storage/Transport: -20 to 70 °C / -4 to 158 °F

INTERFACES

INTERFACES
 RS-232 / USB / Keyboard Wedge / Wand Multi-Interface

PHYSICAL CHARACTERISTICS

COLORS AVAILABLE
 Light Green/Light Grey (Rubber/Plastic)
DIMENSIONS
 Cradle: 18.6 x 9.9 x 5.6 cm / 7.3 x 3.9 x 2.2 in
 Reader: 18.1 x 7.1 x 10.0 cm / 7.1 x 2.8 x 3.9 in
ENCLOSURE
 Disinfectant-Ready Enclosure Treated with Anti-Microbial Additives
WEIGHT
 Cradle: 246.0 g / 8.7 oz
 Reader: 225.0 g / 8.0 oz

READING PERFORMANCE

LIGHT SOURCE
 Illumination: LED Array 630 - 670 nm
PRINT CONTRAST RATIO (MINIMUM)
 15%
READ RATE (MAXIMUM)
 325 reads/sec.
READING ANGLE
 Pitch: +/- 65°; Roll (Tilt): +/- 35°; Skew (Yaw): +/- 65°
READING INDICATORS
 Beeper (Adjustable Tone and Volume); Datalogic 'Green Spot' Good Read Feedback; Good Read LED
RESOLUTION (MAXIMUM)
 0.076 mm / 3 mils

READING RANGES

TYPICAL DEPTH OF FIELD
 Minimum distance determined by symbol length and scan angle.
 Printing resolution, contrast, and ambient light dependent.
 5 mils: 6.0 to 18.0 cm / 2.3 to 7.0 in
 7.5 mils: 3.5 to 30.0 cm / 1.4 to 11.7 in
 10 mils: 2.0 to 45.0 cm / 0.8 to 17.7 in
 13 mils: 3.0 to 60.0 cm / 1.2 to 23.4 in
 20 mils: 3.0 to 80.0 cm / 1.2 to 31.2 in

SAFETY & REGULATORY

AGENCY APPROVALS
 The product meets necessary safety and regulatory approvals for its intended use.
 The Quick Reference Guide for this product can be referred to for a complete list of certifications.
ENVIRONMENTAL COMPLIANCE
 Complies to China RoHS; Complies to EU RoHS
LED CLASSIFICATION
 IEC 60825-1 Class 1 LED Product

UTILITIES

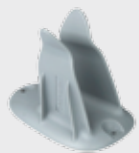
DATALOGIC ALADDIN™
 Datalogic Aladdin configuration program is available for download at no charge.
OPOS / JAVAPOS
 OPOS Utilities are available for download at no charge.
REMOTE HOST DOWNLOAD
 Lowers service costs and improves operations: BC4010

WARRANTY

WARRANTY
 3-Year Factory Warranty

All Products

Mounts/Stands



▪ 11-0362: Holder, Multi-Purpose, Grey



▪ HLD-G040-WH: Desk/Wall Holder, G040, White



▪ STD-AUTO-G040-WH: Smart Stand, G040, White



▪ STD-G040-WH: Basic Stand, G040, White

Cordless Products

Batteries/Battery Chargers

- RBP-GM40 Removable Battery Pack

Base Stations/Chargers

GRYPHON™ | GM4100-HC

- BC4030-HC-433 / BC4031-HC-910: Base/Charger, 433/910 MHz, Multi-Interface, White, Healthcare
- CHR-GM40-WH: Charging Only Base Station, White

GRYPHON™ | GBT4100-HC

- BC4030-HC-BT: Base/Charger, Standard Multi-Interface, Healthcare
- CHR-GM40-WH: Charging Only Base Station, White

